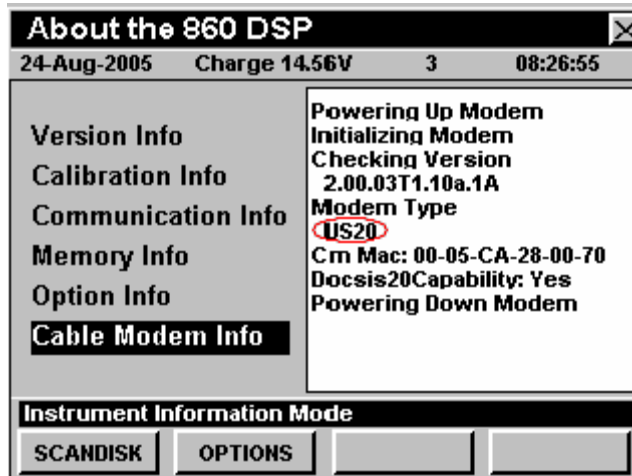


860 DSPi Cable Modem Login

Most Cable Modems have an internal web page with some basic statistics and these pages can be retrieved with Internet Explorer. The 860 DSPi can contain several types of modems; each one having a slightly different web page access. There are DOCSIS 1.0, 1.1, 2.0, and Euro DOCSIS 2.0 modems. The easiest way to determine the modem equipped in your 860 DSPi is to go to the Info Menu and examine Cable Modem Info.



Once you have determined your cable modem type and cable modem IP address (CM address and not CPE), Start Internet Explorer and type in the IP address.

Modem Type	Default CM	Your CM	Username	Password
US 1.0	172.31.31.254		admin	lan
US 1.1	192.168.100.1		admin	hitron
US 2.0	192.168.100.1		*	*
EU 2.0	192.168.100.1		*	*

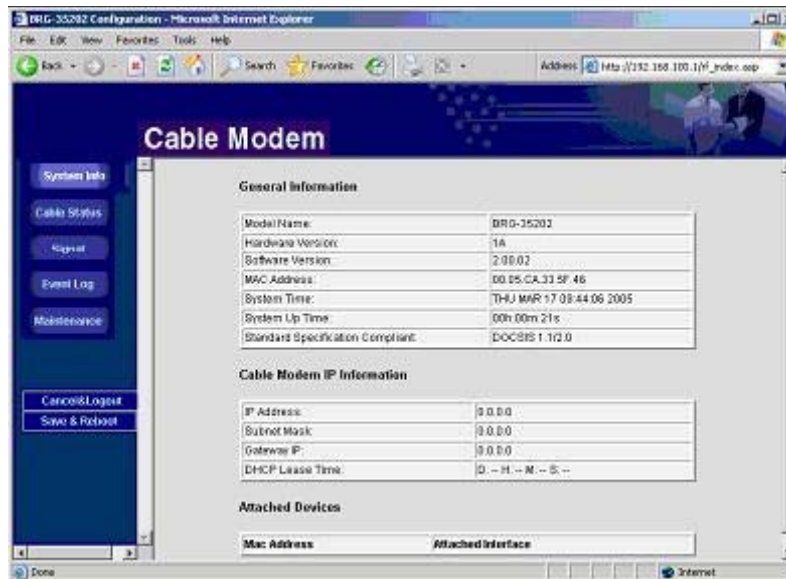
*NO Username/ Password Required

The DOCSIS 2.0 and Euro DOCSIS modems can have the internal Web Browser point directly to the following cable modem pages;

- http://192.168.100.1/rf_info.asp
- http://192.168.100.1/rf_status.asp
- http://192.168.100.1/rf_signal.asp

For Additional Help Contact
 Trilithic Applications Engineering
 1-800-344-2412 or 317-895-3600
support@trilithic.com or
www.trilithic.com

860 DSPi Cable Modem Login
 P/N 0010275025 – Rev 5/07
 1 of 2



Login Page

For Additional Help Contact
Trilithic Applications Engineering
1-800-344-2412 or 317-895-3600
support@trilithic.com or
www.trilithic.com

860 DSPi Cable Modem Login
P/N 0010275025 – Rev 5/07
2 of 2